

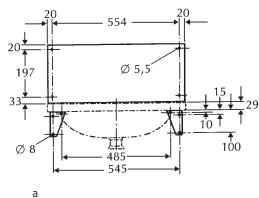
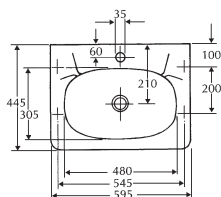
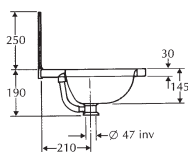
# Ifö Public Steel wash basin RM 6



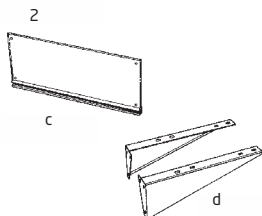
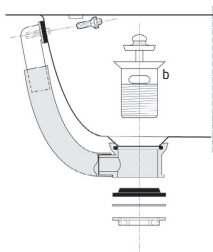
Simple and functional stainless steel wash basin for console mounting. Supplied with overflow kit but excluding brackets and splash-back.

Product	Ifö no
RM-6, handbasin	0396581
Splash-back	0397280
Consoles, set of two	0397380
Set of drainage outlet	0397180

1



a



The wash basin is made of classic 18/10 stainless steel. It is supplied as standard with complete overflow arrangement and with screws and nuts for mounting on brackets. The RM 6 is not available with a factory-fitted mixer tap or drain valve. The RM 6 has folded-down rear edge.

## Accessories:

Splashback, incl. four no. 4 x 3/4" stainless steel screws as well as sealing and mounting strip (Ifö no. 1663105). Stainless steel brackets.

- 1. RM 6 a.** Overflow is included as standard **b.** Not included
- 2. Options c.** Splash back **d.** Brackets