

Ifö hospital wash basin

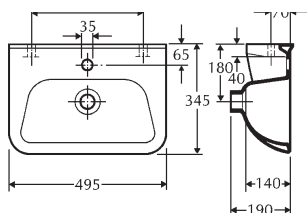


Wash basin specially designed for use in hospitals. Simple shape for ease of cleaning. Does not take up much space. Mounted on bolts. White.



Product	Ifö no
50x35 cm, without tap hole	275000044
50x35 cm, with tap hole	275200044
60x45 cm, without tap hole	276000044
60x45 cm, with tap hole	276200044

2750 , 2752, 495x345 mm



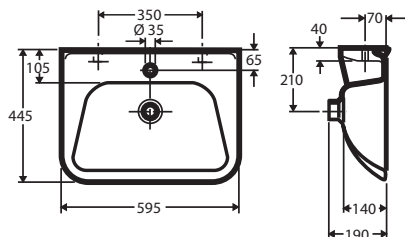
Wash basin without drainage outlet

2750 and 2752, 495x345 mm

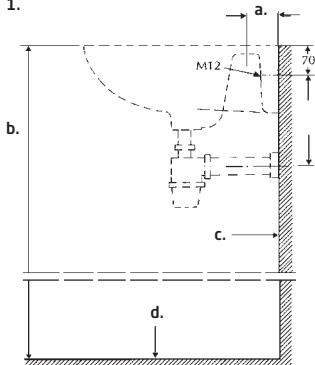
2760 and 2762, 595x445 mm

Tolerance +/- 2%

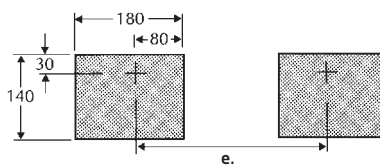
2760 , 2762, 595x445 mm



1.



2.



1. a. Bolt projection 65 ± 2 b. Height of washbasin top above the finished floor c. Finished wall d. Finished floor
2. Suggested support surfaces e. 280-350 mm spacing of mounting bolts