

00_COMBI

Articolo: 00_COMBI70 / 00_COMBI80 / 00_COMBI90

Materiale: Corian

Portata: > 0,4 l/s

Descrizione: Piatto doccia rettangolare dx o sx, da appoggio (A) o da incasso (B) termoformato in Corian, con supporto poliuretano completo di sifone e piletta con scarico libero.

Articolo: 00_COMBI70 / 00_COMBI80 / 00_COMBI90

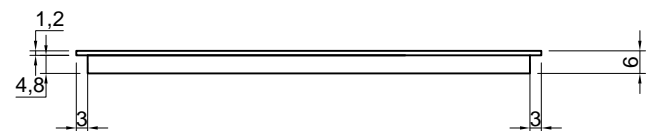
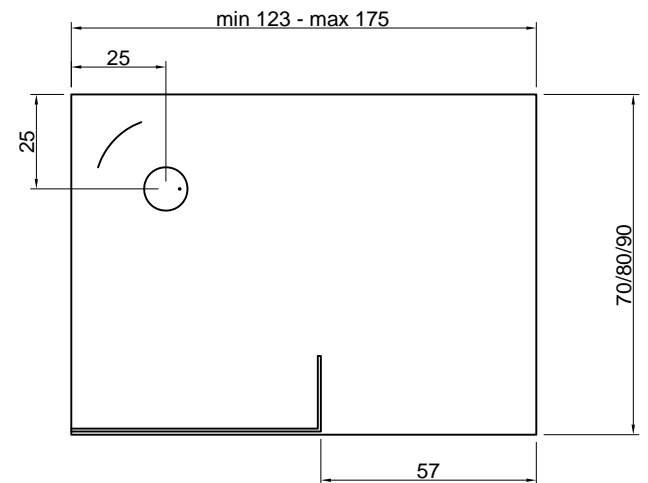
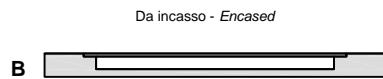
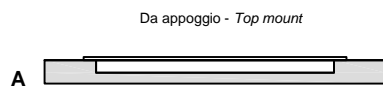
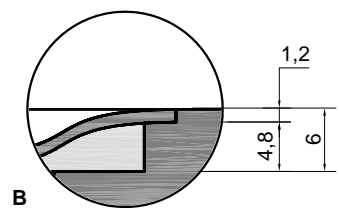
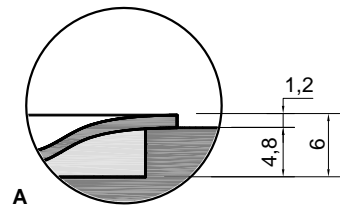
Materiale: Corian

Flow rate: > 0,4 l/s

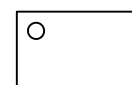
Description: Right or left rectangular top mount (A) or encased (B) shower tray completely in Corian with polyurethane support complete with siphon and drain.



P (cm)	L (cm)	Peso lordo (kg) Gross weight (kg)	Peso netto (kg) Net weight (kg)	Dimensione imballo (cm) / Packing dimensions (cm)		
				L	H	P
70	123	42	24	128	12	75
	136	45	26	141	12	75
	149	48	28	154	12	75
	162	55	32	167	12	75
80	123	46	28	128	12	85
	136	50	30	141	12	85
	149	54	32	154	12	85
	162	61	36	167	12	85
90	123	51	31	128	12	95
	136	55	34	141	12	95
	149	59	36	154	12	95
	162	66	41	167	12	95
	175	70	43	179	12	95



versione DX - right version



versione SX - left version



Avvertenze per la scelta dei box doccia:

Per vetri Art. COMBI20, Art. COMBI120, Art. COMBI70, Art. COMBI80, Art. COMBI90, Art. COMBI170, Art. COMBI180, Art. COMBI190.

Guidelines for selecting a shower enclosure:

For shower enclosures Art. COMBI20, Art. COMBI120, Art. COMBI70, Art. COMBI80, Art. COMBI90, Art. COMBI170, Art. COMBI180, Art. COMBI190.

00_ST

Articolo: 00_ST1

Materiale: Corian

Portata: > 0,4 l/s

Peso lordo: kg 29 ca.

Peso netto: kg 17 ca.

Dimensione imballo: cm 95 x 12 x 75

Descrizione: Piatto doccia rettangolare dx o sx da appoggio (A) o da incasso (B) termoformato in Corian, con supporto poliuretano completo di sifone e piletta con scarico libero.

Article: 00_ST1

Material: Corian

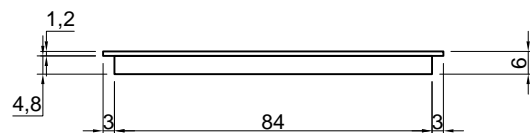
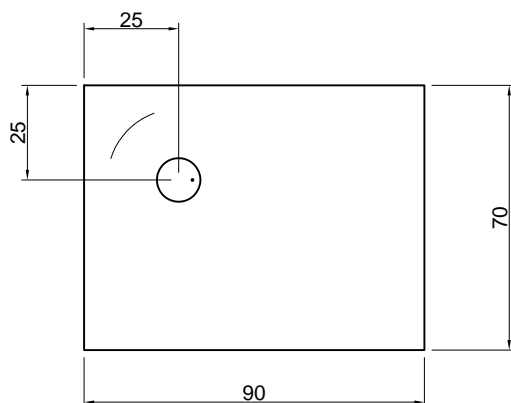
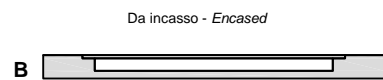
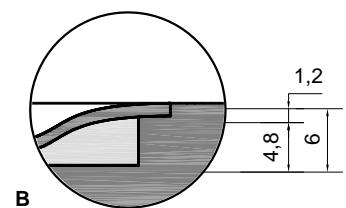
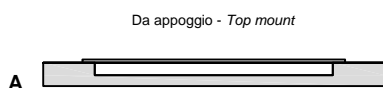
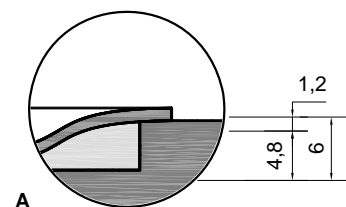
Flow rate: > 0,4 l/s

Gross weight: kg 29 ca.

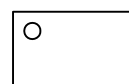
Net weight: kg 17 ca.

Packing dimensions: cm 95 x 12 x 75

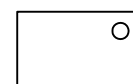
Description: Right or left rectangular top mount (A) or encased (B) shower tray completely in Corian with polyurethane support complete with siphon and drain.



versione DX - right version



versione SX - left version



00_ST

Articolo: 00_ST2

Materiale: Corian

Portata: > 0,4 l/s

Peso lordo: kg 39 ca.

Peso netto: kg 23 ca.

Dimensione imballo: cm 115 x 12 x 85

Descrizione: Piatto doccia rettangolare dx o sx da appoggio (A) o da incasso (B) termoformato in Corian, con supporto poliuretano completo di sifone e piletta con scarico libero.

Article: 00_ST2

Material: Corian

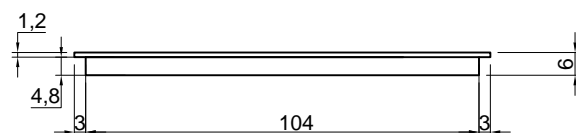
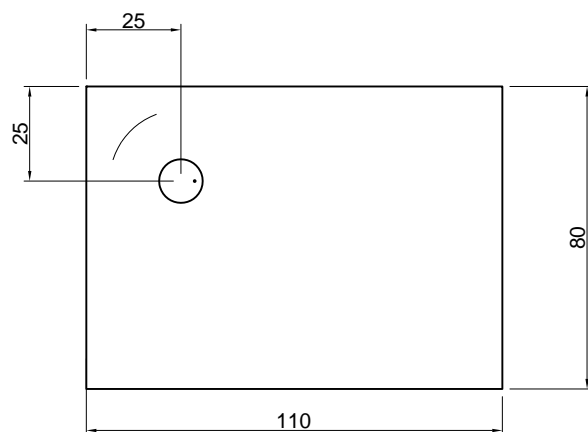
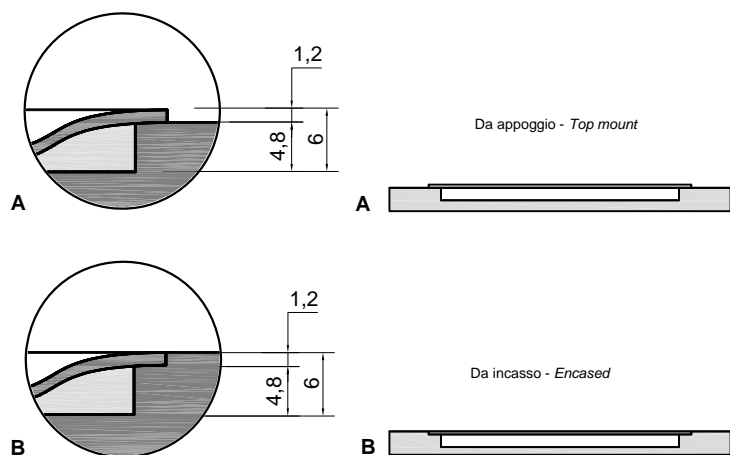
Flow rate: > 0,4 l/s

Gross weight: kg 39 ca.

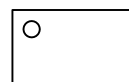
Net weight: kg 23 ca.

Packing dimensions: cm 115 x 12 x 85

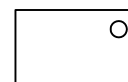
Description: Right or left rectangular top mount (A) or encased (B) shower tray completely in Corian with polyurethane support complete with siphon and drain.



versione DX - right version



versione SX - left version



00_ST

Articolo: 00_ST3

Materiale: Corian

Portata: > 0,4 l/s

Peso lordo: kg 43 ca.

Peso netto: kg 26 ca.

Dimensione imballo: cm 125 x 12 x 85

Descrizione: Piatto doccia rettangolare dx o sx da appoggio (A) o da incasso (B) termoformato in Corian, con supporto poliuretano completo di sifone e piletta con scarico libero.

Article: 00_ST3

Material: Corian

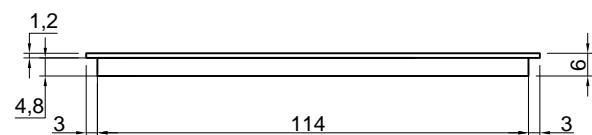
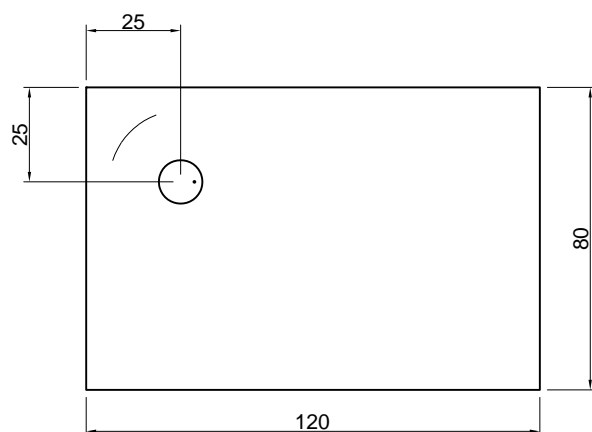
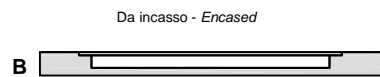
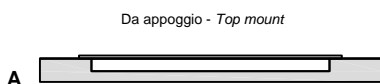
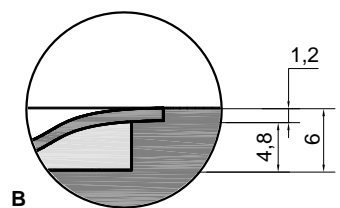
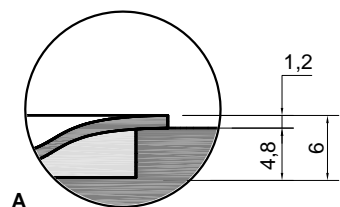
Flow rate: > 0,4 l/s

Gross weight: kg 43 ca.

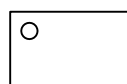
Net weight: kg 26 ca.

Packing dimensions: cm 125 x 12 x 85

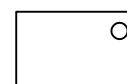
Description: Right or left rectangular top mount (A) or encased (B) shower tray completely in Corian with polyurethane support complete with siphon and drain.



versione DX - right version



versione SX - left version



00_ST

Articolo: 00_ST4

Materiale: Corian

Portata: > 0,4 l/s

Peso lordo: kg 46 ca.

Peso netto: kg 30 ca.

Dimensione imballo: cm 145 x 12 x 85

Descrizione: Piatto doccia rettangolare dx o sx da appoggio (A) o da incasso (B) termoformato in Corian, con supporto poliuretano completo di sifone e piletta con scarico libero.

Article: 00_ST4

Material: Corian

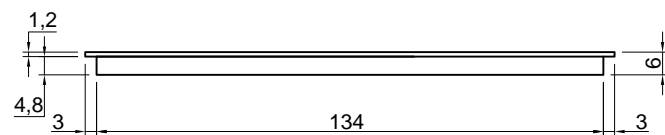
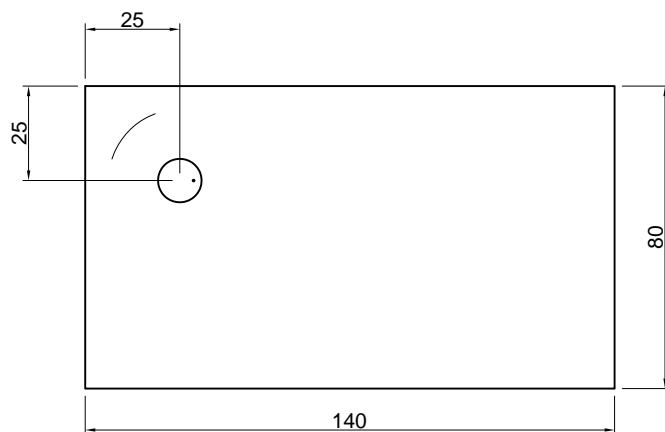
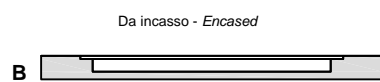
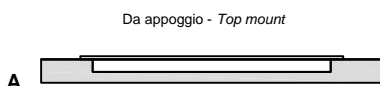
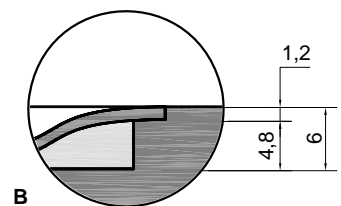
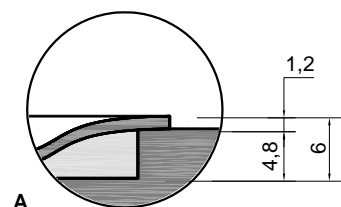
Flow rate: > 0,4 l/s

Gross weight: kg 46 ca.

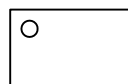
Net weight: kg 30 ca.

Packing dimensions: cm 145 x 12 x 85

Description: Right or left rectangular top mount (A) or encased (B) shower tray completely in Corian with polyurethane support complete with siphon and drain.



versione DX - right version



versione SX - left version



00_ST

Articolo: 00_ST5

Materiale: Corian

Portata: > 0,4 l/s

Peso lordo: kg 35 ca.

Peso netto: kg 22 ca.

Dimensione imballo: cm 95 x 12 x 95

Descrizione: Piatto doccia rettangolare dx o sx da appoggio (A) o da incasso (B) termoformato in Corian, con supporto poliuretano completo di sifone e piletta con scarico libero.

Article: 00_ST5

Material: Corian

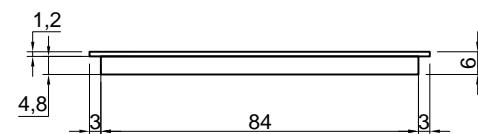
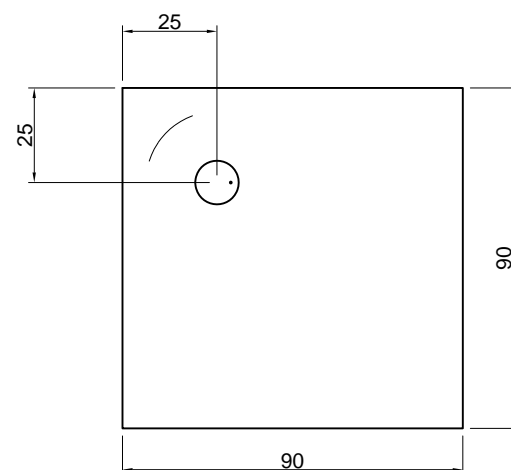
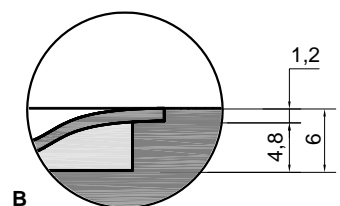
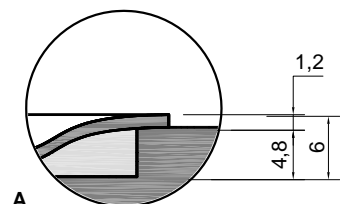
Flow rate: > 0,4 l/s

Gross weight: kg 35 ca.

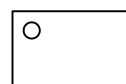
Net weight: kg 22 ca.

Packing dimensions: cm 95 x 12 x 95

Description: Right or left rectangular top mount (A) or encased (B) shower tray completely in Corian with polyurethane support complete with siphon and drain.



versione DX - right version



versione SX - left version



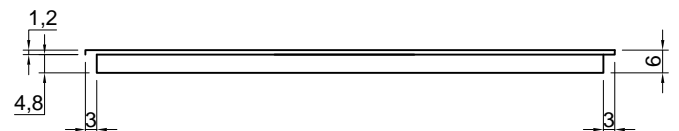
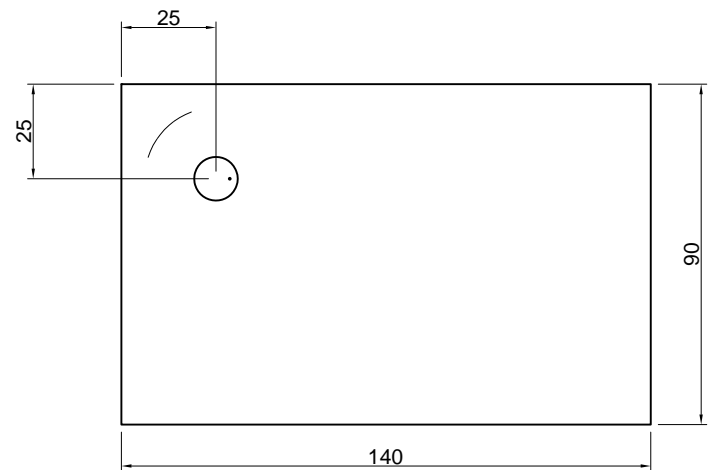
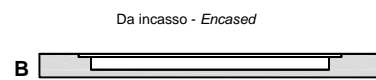
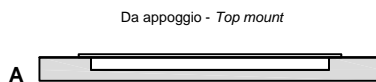
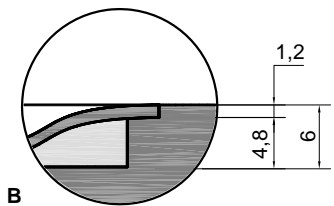
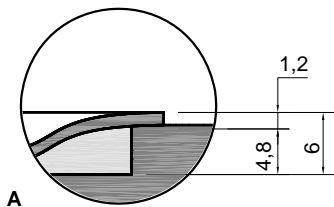
00_ST

Articolo: 00_ST6
Materiale: Corian
Portata: > 0,4 l/s
Peso lordo: kg 55 ca.
Peso netto: kg 34 ca.
Dimensione imballo: cm 145 x 12 x 95

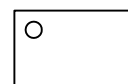
Descrizione: Piatto doccia rettangolare dx o sx da appoggio (A) o da incasso (B) termoformato in Corian, con supporto poliuretano completo di sifone e piletta con scarico libero.

Article: 00_ST6
Material: Corian
Flow rate: > 0,4 l/s
Gross weight: kg 55 ca.
Net weight: kg 34 ca.
Packing dimensions: cm 145 x 12 x 95

Description: Right or left rectangular top mount (A) or encased (B) shower tray completely in Corian with polyurethane support complete with siphon and drain.



versione DX - right version



versione SX - left version



00_XL



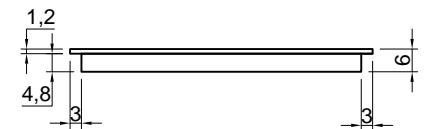
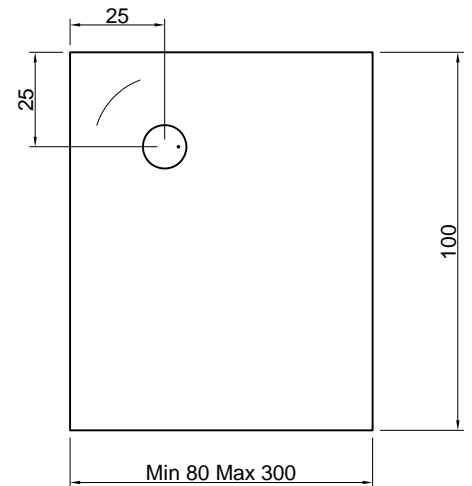
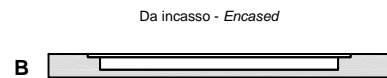
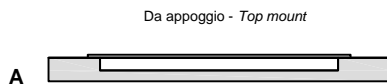
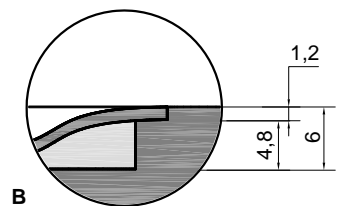
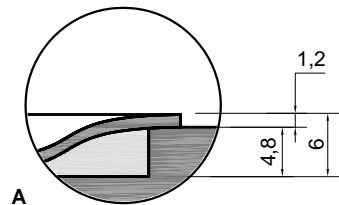
Articolo: 00_XL100
Materiale: Corian
Portata: > 0,4 l/s

Descrizione: Piatto doccia rettangolare dx o sx a misura, da appoggio (A) o da incasso (B) termoformato in Corian, con supporto poliuretano completo di sifone e piletta con scarico libero.

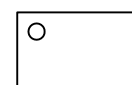
Article: 00_XL100
Material: Corian
Flow rate: > 0,4 l/s

Description: Right or left rectangular top mount (A) or encased (B) shower tray completely in Corian with polyurethane support complete with siphon and drain.

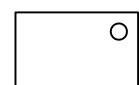
L (cm)	Peso lordo (kg) Gross weight (kg)	Peso netto (kg) Net weight (kg)	Dimensione imballo (cm) / Packing dimensions (cm)		
			L	H	P
80/90	38	24	95	12	105
91/100	42	27	105	12	105
101/110	46	29	115	12	105
111/120	51	32	125	12	105
121/130	55	35	135	12	105
131/140	59	37	145	12	105
141/150	63	40	155	12	105
151/160	67	43	165	12	105
161/170	72	45	175	12	105
171/180	76	48	185	12	105
181/190	80	51	195	12	105
191/200	84	53	205	12	105
201/210	88	56	215	12	105
211/220	93	59	225	12	105
221/230	97	61	235	12	105
231/240	101	64	245	12	105
241/250	105	67	255	12	105
251/260	109	69	265	12	105
261/270	114	72	275	12	105
271/280	118	75	285	12	105
281/290	122	77	295	12	105
291/300	126	80	305	12	105



versione DX - right version



versione SX - left version



Posizione scarico

Da cm 181 a cm 300 su richiesta è possibile inserire un secondo scarico completo di piletta sifonata (la pendenza sarà divisa per due).

Drain position

From 181 - 300 cm upon request it is possible to have a second drain complete with trap and plug (the slope will be divided in half).

00_XL



Articolo: 00_XL110
 Materiale: Corian
 Portata: > 0,4 l/s

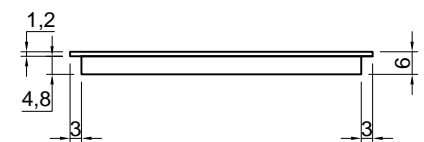
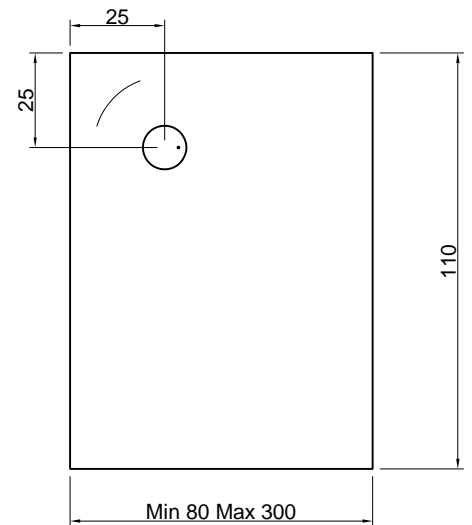
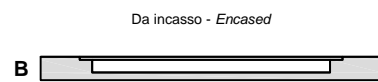
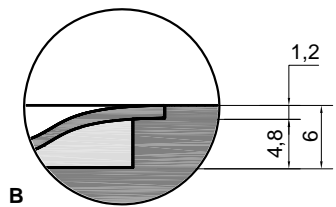
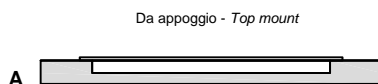
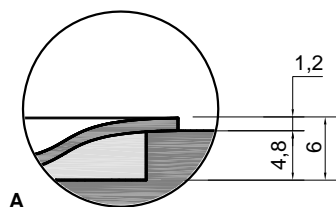
Descrizione: Piatto doccia rettangolare dx o sx a misura, da appoggio (A) o da incasso (B) termoformato in Corian, con supporto poliuretano completo di sifone e piletta con scarico libero.

Article: 00_XL110
 Material: Corian
 Flow rate: > 0,4 l/s

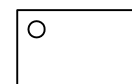
Description: Right or left rectangular top mount (A) or encased (B) shower tray completely in Corian with polyurethane support complete with siphon and drain.



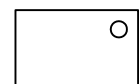
L (cm)	Peso lordo (kg) Gross weight (kg)	Peso netto (kg) Net weight (kg)	Dimensione imballo (cm) / Packing dimensions (cm)		
			L	H	P
80/90	40	26	95	12	115
91/100	45	29	105	12	115
101/110	49	32	115	12	115
111/120	54	35	125	12	115
121/130	58	38	135	12	115
131/140	63	41	145	12	115
141/150	67	44	155	12	115
151/160	72	47	165	12	115
161/170	76	50	175	12	115
171/180	81	53	185	12	115
181/190	85	56	195	12	115
191/200	90	59	205	12	115
201/210	94	62	215	12	115
211/220	99	65	225	12	115
221/230	103	67	235	12	115
231/240	108	70	245	12	115
241/250	112	73	255	12	115
251/260	117	76	265	12	115
261/270	121	79	275	12	115
271/280	126	82	285	12	115
281/290	130	85	295	12	115
291/300	135	88	305	12	115



versione DX - right version



versione SX - left version



Posizione scarico

Da cm 181 a cm 300 su richiesta è possibile inserire un secondo scarico completo di piletta sifonata (la pendenza sarà divisa per due).

Drain position

From 181 - 300 cm upon request it is possible to have a second drain complete with trap and plug (the slope will be divided in half).

00_XL



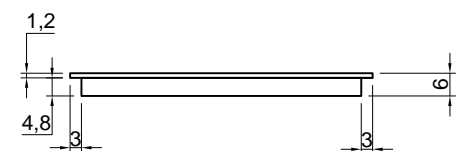
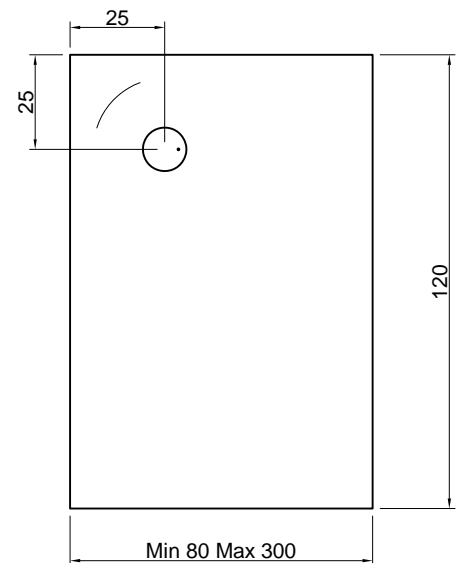
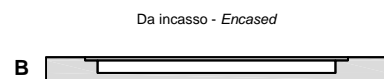
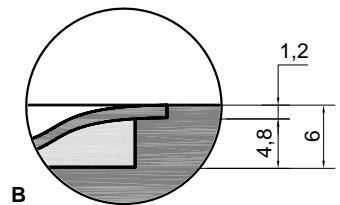
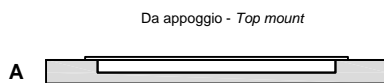
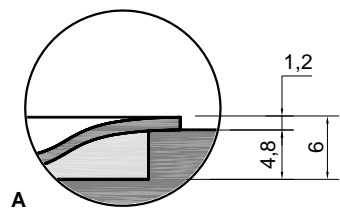
Articolo: 00_XL120
Materiale: Corian
Portata: > 0,4 l/s

Descrizione: Piatto doccia rettangolare dx o sx a misura, da appoggio (A) o da incasso (B) termoformato in Corian, con supporto poliuretano completo di sifone e piletta con scarico libero.

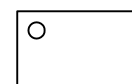
Article: 00_XL120
Material: Corian
Flow rate: > 0,4 l/s

Description: Right or left rectangular top mount (A) or encased (B) shower tray completely in Corian with polyurethane support complete with siphon and drain.

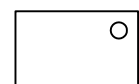
L (cm)	Peso lordo (kg) Gross weight (kg)	Peso netto (kg) Net weight (kg)	Dimensione imballo (cm) / Packing dimensions (cm)		
			L	H	P
80/90	43	29	95	12	125
91/100	47	32	105	12	125
101/110	52	35	115	12	125
111/120	57	38	125	12	125
121/130	62	42	135	12	125
131/140	66	45	145	12	125
141/150	71	48	155	12	125
151/160	76	51	165	12	125
161/170	81	54	175	12	125
171/180	85	58	185	12	125
181/190	90	61	195	12	125
191/200	95	64	205	12	125
201/210	100	67	215	12	125
211/220	104	70	225	12	125
221/230	108	74	235	12	125
231/240	114	77	245	12	125
241/250	119	80	255	12	125
251/260	123	83	265	12	125
261/270	128	86	275	12	125
271/280	133	90	285	12	125
281/290	137	93	295	12	125
291/300	142	96	305	12	125



versione DX - right version



versione SX - left version



Posizione scarico

Da cm 181 a cm 300 su richiesta è possibile inserire un secondo scarico completo di piletta sifonata (la pendenza sarà divisa per due).

Drain position

From 181 - 300 cm upon request it is possible to have a second drain complete with trap and plug (the slope will be divided in half).

00_XL



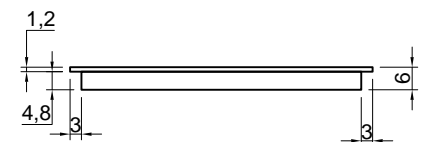
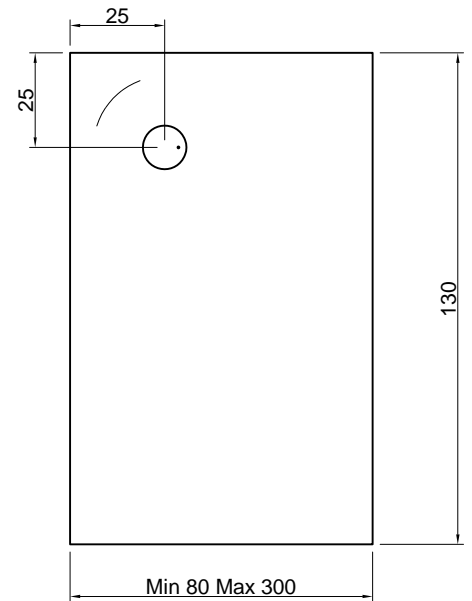
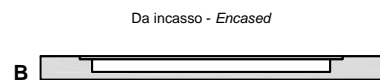
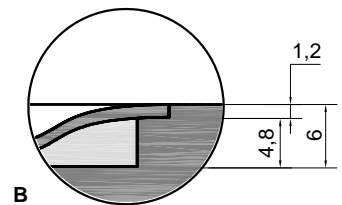
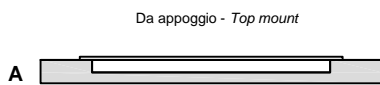
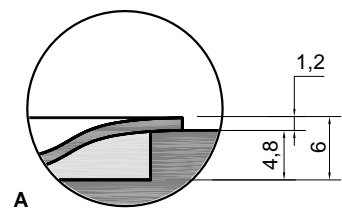
Articolo: 00_XL130
Materiale: Corian
Portata: > 0,4 l/s

Descrizione: Piatto doccia rettangolare dx o sx a misura, da appoggio (A) o da incasso (B) termoformato in Corian, con supporto poliuretano completo di sifone e piletta con scarico libero.

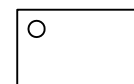
Article: 00_XL130
Material: Corian
Flow rate: > 0,4 l/s

Description: Right or left rectangular top mount (A) or encased (B) shower tray completely in Corian with polyurethane support complete with siphon and drain.

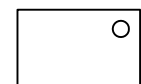
L (cm)	Peso lordo (kg) Gross weight (kg)	Peso netto (kg) Net weight (kg)	Dimensione imballo (cm) / Packing dimensions (cm)		
			L	H	P
80/90	45	31	95	12	135
91/100	50	35	105	12	135
101/110	55	38	115	12	135
111/120	60	42	125	12	135
121/130	65	45	135	12	135
131/140	70	49	145	12	135
141/150	74	52	155	12	135
151/160	79	55	165	12	135
161/170	84	59	175	12	135
171/180	89	62	185	12	135
181/190	94	66	195	12	135
191/200	99	69	205	12	135
201/210	104	73	215	12	135
211/220	109	76	225	12	135
221/230	114	80	235	12	135
231/240	119	83	245	12	135
241/250	124	87	255	12	135
251/260	129	90	265	12	135
261/270	134	94	275	12	135
271/280	139	97	285	12 <td>135</td>	135
281/290	144	101	295	12	135
291/300	149	104	305	12	135



versione DX - right version



versione SX - left version



Posizione scarico

Da cm 181 a cm 300 su richiesta è possibile inserire un secondo scarico completo di piletta sifonata (la pendenza sarà divisa per due).

Drain position

From 181 - 300 cm upon request it is possible to have a second drain complete with trap and plug (the slope will be divided in half).

00_XL



Articolo: 00_XL140
Materiale: Corian
Portata: > 0,4 l/s

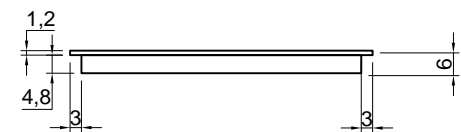
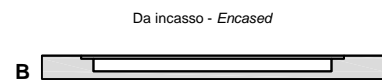
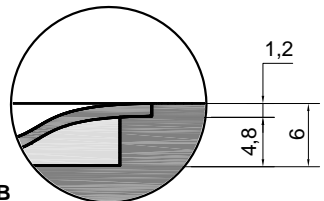
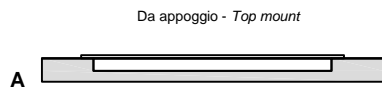
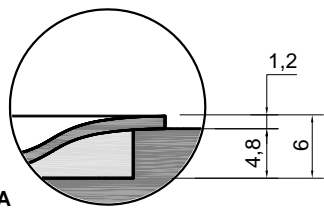
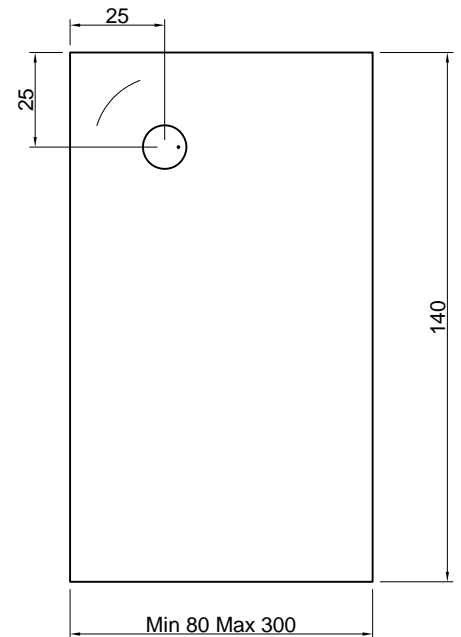
Descrizione: Piatto doccia rettangolare dx o sx a misura, da appoggio (A) o da incasso (B) termoformato in Corian, con supporto poliuretano completo di sifone e piletta con scarico libero.

Article: 00_XL140
Material: Corian
Flow rate: > 0,4 l/s

Description: Right or left rectangular top mount (A) or encased (B) shower tray completely in Corian with polyurethane support complete with siphon and drain.

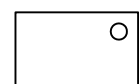
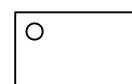


L (cm)	Peso lordo (kg) Gross weight (kg)	Peso netto (kg) Net weight (kg)	Dimensione imballo (cm) / Packing dimensions (cm)		
			L	H	P
80/90	46	34	95	12	145
91/100	52	37	105	12	145
101/110	57	41	115	12	145
111/120	62	45	125	12	145
121/130	67	49	135	12	145
131/140	72	52	145	12	145
141/150	77	56	155	12	145
151/160	83	60	165	12	145
161/170	88	63	175	12	145
171/180	93	67	185	12	145
181/190	98	71	195	12	145
191/200	103	75	205	12	145
201/210	108	78	215	12	145
211/220	114	82	225	12	145
221/230	119	86	235	12	145
231/240	124	90	245	12	145
241/250	129	93	255	12	145
251/260	134	97	265	12	145
261/270	139	101	275	12	145
271/280	145	105	285	12	145
281/290	150	108	295	12	145
291/300	155	112	305	12	145



versione DX - right version

versione SX - left version



Posizione scarico

Da cm 181 a cm 300 su richiesta è possibile inserire un secondo scarico completo di piletta sifonata (la pendenza sarà divisa per due).

Drain position

From 181 - 300 cm upon request it is possible to have a second drain complete with trap and plug (the slope will be divided in half).

00_XL



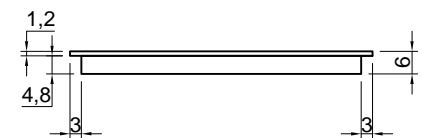
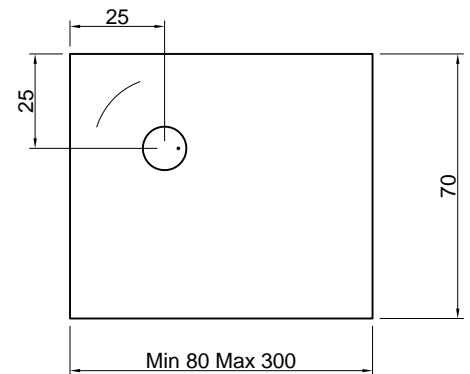
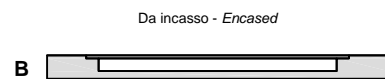
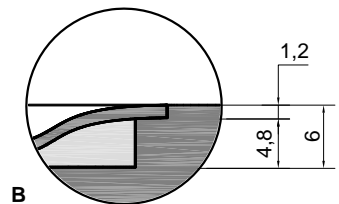
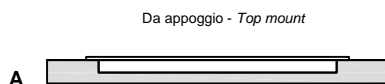
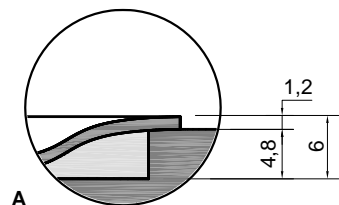
Articolo: 00_XL70
Materiale: Corian
Portata: > 0,4 l/s

Descrizione: Piatto doccia rettangolare dx o sx a misura, da appoggio (A) o da incasso (B) termoformato in Corian, con supporto poliuretano completo di sifone e piletta con scarico libero.

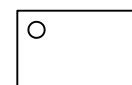
Article: 00_XL70
Material: Corian
Flow rate: > 0,4 l/s

Description: Right or left rectangular top mount (A) or encased (B) shower tray completely in Corian with polyurethane support complete with siphon and drain.

L (cm)	Peso lordo (kg) Gross weight (kg)	Peso netto (kg) Net weight (kg)	Dimensione imballo (cm) / Packing dimensions (cm)		
			L	H	P
80/90	29	17	95	12	75
91/100	32	19	105	12	75
101/110	35	21	115	12	75
111/120	39	22	125	12	75
121/130	42	24	135	12	75
131/140	45	26	145	12	75
141/150	48	28	155	12	75
151/160	52	30	165	12	75
161/170	55	32	175	12	75
171/180	58	34	185	12	75
181/190	61	35	195	12	75
191/200	64	37	205	12	75
201/210	68	39	215	12	75
211/220	71	41	225	12	75
221/230	74	43	235	12	75
231/240	77	45	245	12	75
241/250	81	47	255	12	75
251/260	84	49	265	12	75
261/270	87	50	275	12	75
271/280	90	52	285	12	75
281/290	93	54	295	12	75
291/300	97	56	305	12	75



versione DX - right version



versione SX - left version



Posizione scarico

Da cm 181 a cm 300 su richiesta è possibile inserire un secondo scarico completo di piletta sifonata (la pendenza sarà divisa per due).

Drain position

From 181 - 300 cm upon request it is possible to have a second drain complete with trap and plug (the slope will be divided in half).

00_XL



Articolo: 00_XL80

Materiale: Corian

Portata: > 0,4 l/s

Descrizione: Piatto doccia rettangolare dx o sx a misura, da appoggio (A) o da incasso (B) termoformato in Corian, con supporto poliuretano completo di sifone e piletta con scarico libero.

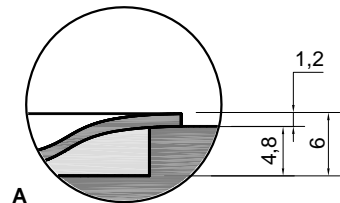
Article: 00_XL80

Material: Corian

Flow rate: > 0,4 l/s

Description: Right or left rectangular top mount (A) or encased (B) shower tray completely in Corian with polyurethane support complete with siphon and drain.

L (cm)	Peso lordo (kg) Gross weight (kg)	Peso netto (kg) Net weight (kg)	Dimensione imballo (cm) / Packing dimensions (cm)		
			L	H	P
80/90	32	19	95	12	85
91/100	36	21	105	12	85
101/110	39	23	115	12	85
111/120	43	26	125	12	85
121/130	46	28	135	12	85
131/140	50	30	145	12	85
141/150	54	32	155	12	85
151/160	57	34	165	12	85
161/170	61	36	175	12	85
171/180	64	38	185	12	85
181/190	68	41	195	12	85
191/200	72	43	205	12	85
201/210	75	45	215	12	85
211/220	79	47	225	12	85
221/230	82	49	235	12	85
231/240	86	51	245	12	85
241/250	89	53	255	12	85
251/260	93	55	265	12	85
261/270	97	58	275	12	85
271/280	100	60	285	12	85
281/290	104	62	295	12	85
291/300	107	64	305	12	85

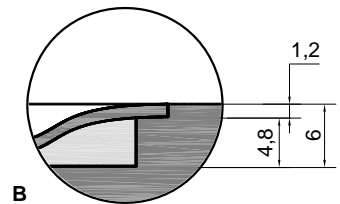


A

Da appoggio - Top mount



A

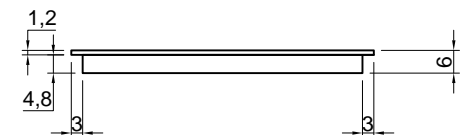
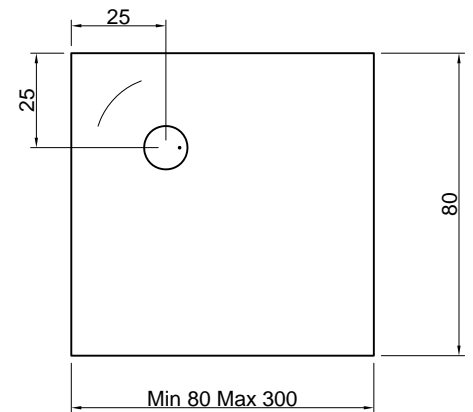


B

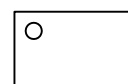
Da incasso - Encased



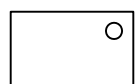
B



versione DX - right version



versione SX - left version



Posizione scarico

Da cm 181 a cm 300 su richiesta è possibile inserire un secondo scarico completo di piletta sifonata (la pendenza sarà divisa per due).

Drain position

From 181 - 300 cm upon request it is possible to have a second drain complete with trap and plug (the slope will be divided in half).

00_XL



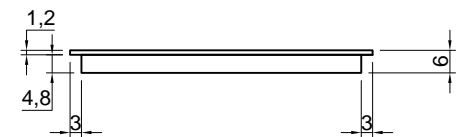
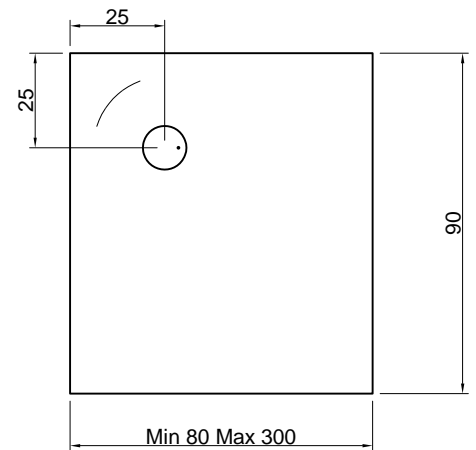
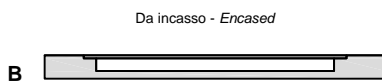
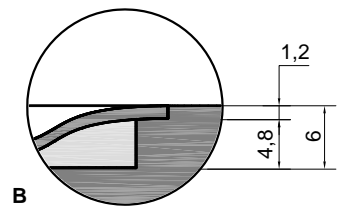
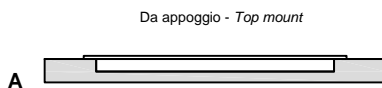
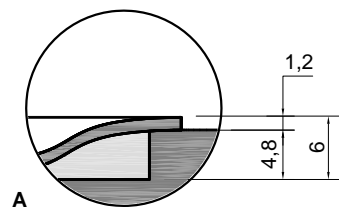
Articolo: 00_XL90
Materiale: Corian
Portata: > 0,4 l/s

Descrizione: Piatto doccia rettangolare dx o sx a misura, da appoggio (A) o da incasso (B) termoformato in Corian, con supporto poliuretano completo di sifone e piletta con scarico libero.

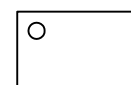
Article: 00_XL90
Material: Corian
Flow rate: > 0,4 l/s

Description: Right or left rectangular top mount (A) or encased (B) shower tray completely in Corian with polyurethane support complete with siphon and drain.

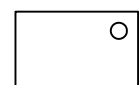
L (cm)	Peso lordo (kg) Gross weight (kg)	Peso netto (kg) Net weight (kg)	Dimensione imballo (cm) / Packing dimensions (cm)		
			L	H	P
80/90	35	22	95	12	95
91/100	39	24	105	12	95
101/110	43	26	115	12	95
111/120	47	29	125	12	95
121/130	51	31	135	12	95
131/140	55	34	145	12	95
141/150	59	36	155	12	95
151/160	62	38	165	12	95
161/170	66	41	175	12	95
171/180	70	43	185	12	95
181/190	74	46	195	12	95
191/200	78	48	205	12	95
201/210	82	50	215	12	95
211/220	86	53	225	12	95
221/230	90	55	235	12	95
231/240	94	58	245	12	95
241/250	98	60	255	12	95
251/260	102	62	265	12	95
261/270	105	65	275	12	95
271/280	109	67	285	12	95
281/290	113	70	295	12	95
291/300	117	72	305	12	95



versione DX - right version



versione SX - left version



Posizione scarico

Da cm 181 a cm 300 su richiesta è possibile inserire un secondo scarico completo di piletta sifonata (la pendenza sarà divisa per due).

Drain position

From 181 - 300 cm upon request it is possible to have a second drain complete with trap and plug (the slope will be divided in half).

antoniolupi

SCHEDE PRODOTTO

MATERIALI IMPIEGATI

CORIAN®

Corian® è un materiale compatto e non poroso, composto in modo omogeneo da $\pm 1/3$ di resina acrilica (conosciuta anche come Metracrilato di Polimetile o PMMA) e da $\pm 2/3$ di sostanze minerali. Il componente principale è il Tri-idrato di Alluminio (ATH), un minerale derivato dalla bauxite, da cui viene estratto l'alluminio. Corian® è il materiale originale prodotto dalla DuPont per superfici solide.

Essendo solido ed omogeneo è facilmente riparabile. Molti danni dovuti da urti, calore o prodotti chimici possono essere riparati solitamente sul luogo ridando integralmente alla superficie il suo aspetto originale, regolare, igienico.

ISTRUZIONI PER L'USO E MANUTENZIONE

PULIZIA

Pulire con panno umido o comuni detergenti liquidi per la pulizia domestica. Sono particolarmente consigliati detergenti liquidi, quali CLEANSURFACE utilizzati con spugna abrasiva tipo SCOTCH BRITE®. Non utilizzare prodotti chimici aggressivi quali acetone, trielina, cloruro di metilene, diluenti di smalto per unghie, acidi e basi forti.

ATOSSICITÀ

Il prodotto non risulta tossico o nocivo all'uomo, agli animali o all'ambiente.

ECOLOGIA

Alla fine della sua utilizzazione non disperdere l'oggetto nell'ambiente, ma smaltirlo secondo le modalità previste dall'azienda comunale di smaltimento rifiuti.

AVVERTENZA

I lavabi, piatti doccia e vasche vanno posati in bolla.

Guida per la rimozione delle macchie*

Tipo di macchia	Procedura
Manutenzione giornaliera.	A. B. C. E.
Aceto, caffè, tè, succo di limone, olii vegetali, ketchup, residui di grasso, olio.	A. B. C. D.
Acqua ricca di calcare, sapone, minerali.	A. B. F.
Polline di giglio, zafferano, graffio significativo, bruciatura di sigaretta, lucido per scarpe, inchiostro, segno di penna.	A. B. C. E.
Mercurocromo, sangue, vino rosso, profumo.	A. B. C. D. E.
Smalto per unghie.	A. B. C. G.
Ferro o ruggine.	A. B. C. H.
Iodio, muffa.	A. B. C. E.

A Rimuovere il residuo con panno

B Sciacquare la superficie con acqua calda e asciugare con panno morbido

C Usare un panno umido e una crema abrasiva leggera (es. Cif®)

D Usare una spugna abrasiva (tipo Scotch-Brite®) strofinare sulla macchia con un prodotto detergente a base di ammoniaca (es. Mastro Lindo)

E Usare una spugna abrasiva (tipo Scotch-Brite®) e strofinare sulla macchia con candeggina**

F Usare una spugna abrasiva (tipo Scotch-Brite®) e strofinare sulla macchia con un prodotto di pulizia anticalcare (tipo Viakal®) o aceto. Sciacquare più volte con acqua calda ed asciugare con panno morbido

G Usare una spugna abrasiva (tipo Scotch-Brite®) e strofinare sulla macchia con un prodotto privo di acetone. Sciacquare più volte con acqua calda e asciugare con panno morbido

H Usare una spugna abrasiva (tipo Scotch-Brite®) e strofinare sulla macchia con una paglietta o rimuovere la ruggine. Sciacquare più volte con acqua calda e asciugare con un panno morbido

* Pulire facendo sempre movimenti rotatori

** La candeggina può scolorire il Corian® se non è rimossa completamente risciacquare con abbondante acqua

Avvertenza

La presente scheda prodotto ottempera alle disposizioni della legge del 10 aprile 1991 n. 126 "Norme per l'informazione del consumatore" e al Decreto del 8 febbraio 1997 n.101 "Regolamento d'attuazione".

ITALIANO - ENGLISH - GERMAN - FRENCH - SPANISH - RUSSIAN

Per informazioni su schede di montaggio, prodotti, uso e manutenzione, consultare il nostro sito www.antoniolupi.it e scaricare dall'area "Download" i file.

For information regarding installation, products, usage and maintenance, please consult our web site www.antoniolupi.it and download from the "Download" area the correct file.

Informationen zur Montage und zu Produkten, technische Datenblätter sowie Pflege- und Materialerläuterungen finden Sie unter unserer Webseite www.antoniolupi.it auf der Download-Seite.

Pour toutes les informations concernant le montage des meubles, les schémas techniques ainsi que pour l'entretien des produits, vous pouvez consulter notre site www.antoniolupi.it à la rubrique aera "Download".

Para mas información sobre esquemas de montaje, producto, uso y mantenimiento, consultar nuestra página web www.antoniolupi.it y descargar los archivos correspondientes en apartado "Download".

Всю информацию, касающуюся монтажных схем, продукции, эксплуатации и ухода, можно уточнить на нашем сайте www.antoniolupi.it и скачать нужные файлы в разделе "Download".

antoniolupi

PRODUCT DESCRIPTION

MATERIALS USED

CORIAN®

Corian® is a solid, non-porous surfacing material homogeneously composed of $\pm 1/3$ acrylic resin (also known as PolyMethyl MethAcrylate or PMMA), and $\pm 2/3$ natural minerals. These minerals are composed of Aluminium TriHydrate(ATH) derived from bauxite, an ore from which aluminium is extracted. Being inherently "renewable" because it is solid and homogeneous all the way through. Most damage, including severe impact, heat or chemical damage, can usually be repaired on site to restore the original, smooth, hygienic solid surface integrity.

USAGE AND MAINTENANCE INSTRUCTIONS

CLEANING

Clean with a damp cloth or with common liquid detergents for domestic use. Particularly recommended are liquid detergents such as CIF® used with an abrasive sponge such as a SCOTCH BRITE® pad. Do not use aggressive chemical products such as acetone, trichloroethylene nor strong acids. Warning: Level sinks, shower trays and tubs.

Cleaning of wood covering

Avoid using common products for cleaning the wood which can damage the matt finish. Use exclusively the CLEANWOOD product provided by our company. Use a damp cloth with this product and distribute evenly over the surface to clean. Avoid the use of abrasive sponges.

TOXICITY

The product does not appear toxic to humans, animals or to the environment. Only discard in appropriate disposals according to rules and regulations in your area.

ECOLOGY

Only discard in appropriate disposals according to rules and regulations in your area.

WARNING

The sinks, shower trays and tubs must be installed levelled.

Warning

The current product information complies with law n.126 of the 10th of April 1991 "Regulations for consumer information" and to ordinance n.101 of the 8th of February 1997 "Fulfilment Regulations".

Stain removing guide*

Common household spills.	Procedura
Everyday cleaning.	A. B. C. E.
Vinegar, coffee, tea, lemon juice, vegetable, dyes, ketchup, grease, fat and oil residues.	A. B. C. D.
Water scale, soap, minerals.	A. B. F.
Pollen, saffron, a light scratch, cigarette burns, shoe polish, Ink, marker pen.	A. B. C. E.
Mercurochrome, blood, red wine, perfume.	A. B. C. D. E.
Nail varnish spills.	A. B. C. G.
Iron or rust.	A. B. C. H.
Iodine, mildew.	A. B. C. E.

A Remove excess with a soft cloth

B Rinse surface with warm water and dry with a soft cloth

C Use a damp cloth and a mild cream abrasive cleanser. (e.g. Jif active, Bar Keepers Friend);

D Use an abrasive plastic scouring pad (e.g. Scotch-Brite® type) and rub over the stain with detergent or an ammonia based hard-surface cleaner (e.g. Flash, Mr. Muscle, Comet)

E Use an abrasive plastic scouring pad (e.g. Scotch-Brite® type) and rub over the stain with some bleach** (Javel). Rinse several times with warm water and dry with a soft cloth **

F Use an abrasive plastic scouring pad (e.g. Scotch-Brite® type) and rub over the stain with standard household lime-scale remover or vinegar (e.g. Viakal type). Rinse several times with warm water and dry with a soft cloth

G Use an abrasive plastic scouring pad (e.g. Scotch-Brite® type) and rub over the stain with non-acetone based remover. Rinse several times with warm water and dry with a soft cloth

H Use an abrasive plastic scouring pad (e.g. Scotch-Brite® type) and rub over the stain with a metal cleaner or rust remover. Rinse several times with warm water and dry with a soft cloth

* Clean using a circular motion

** La candeggina può scolorire il Corian® se non è rimossa completamente risciacquare con abbondante acqua