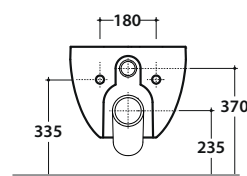
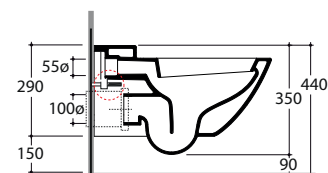
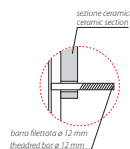
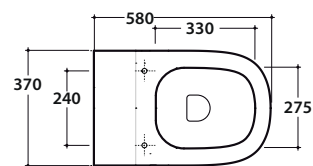


STOCKHOLM VASO SOSPESO LAS02.BI

GLOBO



Cod. **LAS02.BI**

Vaso sospeso con sistema di fissaggio dal basso nascosto. Scarico 4,5 / 3 Lt. Peso 20kg
Completo di fissaggi.

Wall-hung pan provided with lower hidden fixing system. Drain 4,5 / 3 Lt. Weight 20 kg.
Fixing kit included



Cod. **LA019BI**

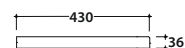
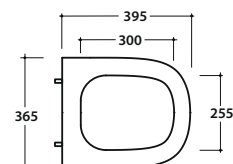
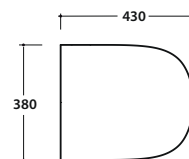
Coprivaso in termoindurente rimovibile. Peso 3 kg.

Thermo-setting seat-cover removable. Weight 3 kg.

Cod. **LA020BI**

Coprivaso in termoindurente chiusura rallentata rimovibile. Peso 3 kg.

Thermo-setting seat-cover with soft-closing system removable. Weight 3 kg.



Cod. **VA132**

Riduttore flusso di scarico.

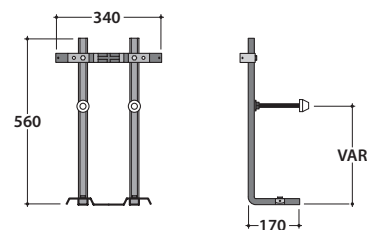
Flow reductor.



Cod. **FI002**

Staffa di fissaggio a "L". (Barra filettata $\varnothing 12$). Peso 2,5 kg.

Fixing brackets for W/H sanitary. The thread bar $\varnothing 12$. Weight 2,5 kg.



Cod. **PU001**

Protezione antiurto e acustica. Peso 0,2 kg.

Acoustic and crash protection. Weight 0,2 kg.